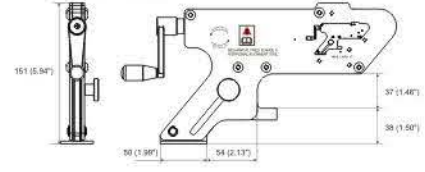


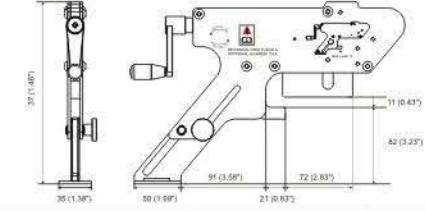
- Maksimum delik çapı: 16-31.5 mm
- Kapasite: 1-90 Ton (10-90Kn)
- Maksimum çalışma basıncı: 700 bar
- Yüksek basınçlı büyük çaplı flanşlar için tasarlanmıştır



Minimum extension FA1TM in mm (inch)

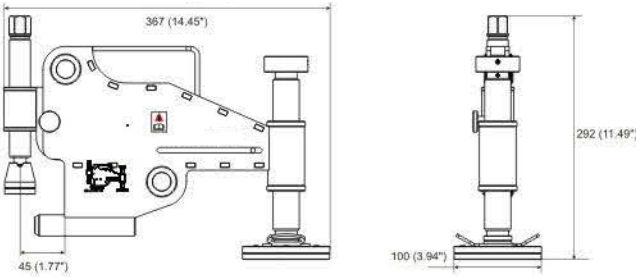


Maximum extension FA1TM in mm (inch)

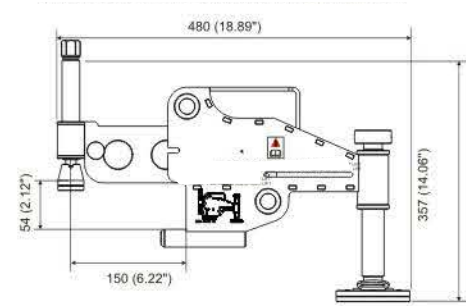


Model	Kapasite (Ton/kN)	İşlem Tipi	Minimum Cıvata Boyutu (in/mm)	Flanş Kalınlığı (in/mm)	Maksimum Tepki Kuvveti 2 Max (Ton)	Cıvata Deliği Çapı Min (mm)	Hizalama Hatası Min (mm)	N. Ağırlık (kg)
FXA1TM	1/10	Mekanik	0.63 / 16	0.55-3.29 / 14-82	1	16	0	3
FXA4TM	4/10	Mekanik	0.95 / 24	1.18-5.23 / 30-133	4	25	0	9
FXA9TM	9/10	Mekanik	1.24 / 31.5	3.66-9.00 / 93-228	9	31.5	0	16
FXA9TE	9/10	Hidrolik	1.24 / 31.5	3.66-9.00 / 93-228	9	31.5	0	16

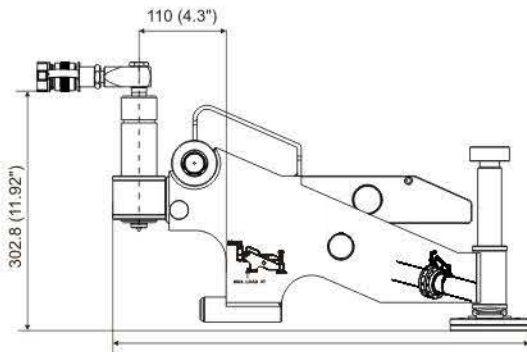
Minimum Strok FXA4TM in mm (inç)



Minimum Strok FXA4TM in mm (inç)



Minimum Strok FXA9TE/9TM in mm (inç)



Minimum Strok FXA9TE/9TM in mm (inç)

